

D-Sub Connectors

High Density CRIMP Contacts, AWG 24-28

Material Specification:

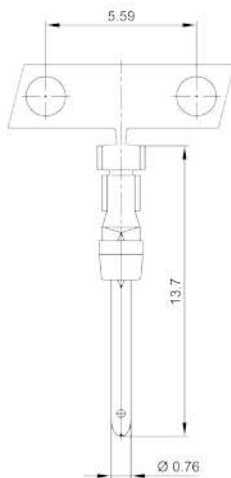
Contacts: Copper Alloy, Stamped & Formed Pins
100 inserts min.

Contact Plating: Selective Gold over Nickel

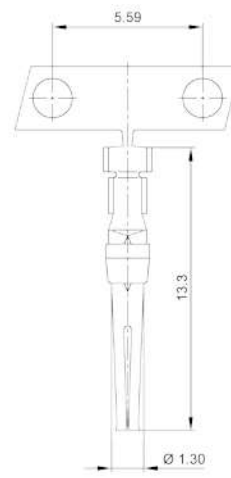
Package: REEL - 10.000pcs



Crimp Plug connector



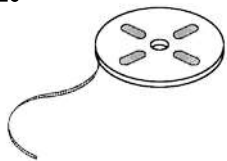
Crimp Socket connector



AWG 24-28 - High Density Crimp Contacts

REEL - AWG 24-28

Volume: 10,000pcs
Direction: Right



Stamped & Formed Crimp Contacts on REEL

| Type: | Size: | Part Number: | Description: |
|-----------------|-----------|--------------|--------------|
| Male Contacts | AWG 24-28 | 2101-0199-21 | HDCTM-G2 |
| Female Contacts | AWG 24-28 | 2101-0199-31 | HDCTF-G2 |



Encitech Connectors AB
Rörkullsvägen 4
SE-302 41 HALMSTAD, Sweden

Tel: +46-(0)35-15 13 90
e-mail: connectors@encitech.com

www.encitech.com