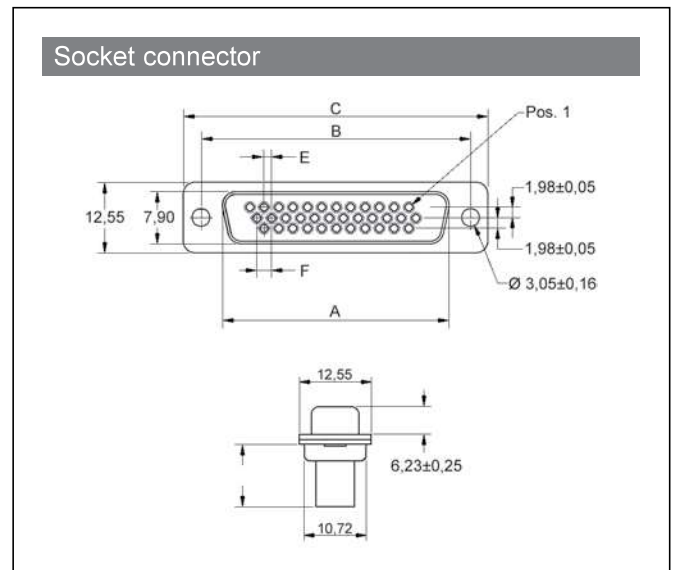
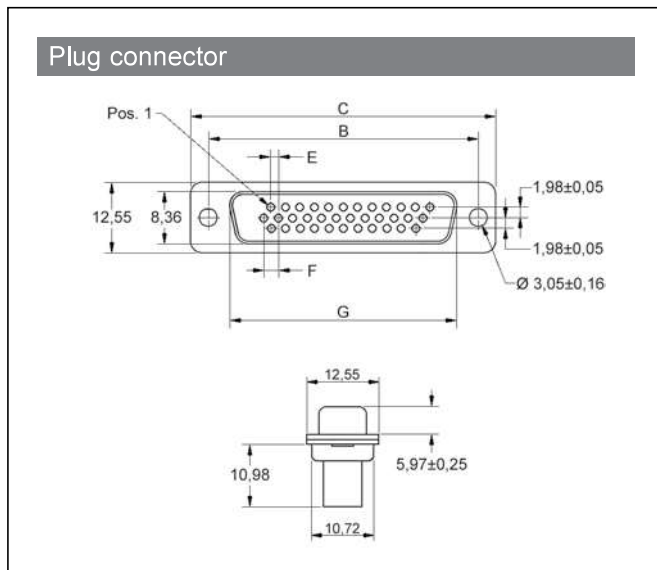


HDBC-Series – D-Crimp Connectors

Material Specification:

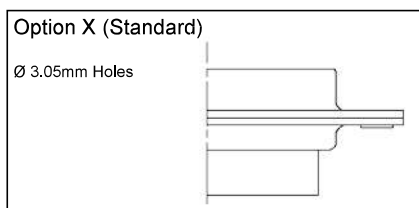
Insulator: Glass filled Polyester, Black
UL94 V-0

Shell: Stamped Steel, Tin Plated



Size	A	B	C	E	F	G
HD15	16,33	24,99	30,81	1,145	2,99	16,62
HD26	24,66	33,32	39,14	1,145	2,99	25,25
HD44	38,38	47,04	53,04	1,145	2,99	38,96
HD62	54,84	63,50	69,32	1,205	2,41	55,25

Order Codes - Standard Type - with Ø 3.05mm Through Hole



Plug Connector		
15	2101-0390-01	HDBC09-SP
26	2101-0390-02	HDBC15-SP
44	2101-0390-03	HDBC25-SP
62	2101-0390-04	HDBC37-SP

Socket Connector		
15	2101-0390-11	HDBC09-SS
26	2101-0390-12	HDBC15-SS
44	2101-0390-13	HDBC25-SS
62	2101-0390-14	HDBC37-SS

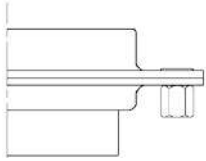


D-Sub Connectors

Order Codes - Option K - Back Nut UNC 4-40

Option K

Back Nut, UNC 4-40



Plug Connector

15	2101-0391-01	HDBC09-SP-K
26	2101-0391-02	HDBC15-SP-K
44	2101-0391-03	HDBC25-SP-K
62	2101-0391-04	HDBC37-SP-K

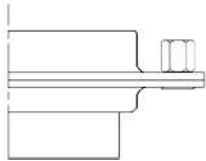
Socket Connector

15	2101-0391-11	HDBC09-SS-K
26	2101-0391-12	HDBC15-SS-K
44	2101-0391-13	HDBC25-SS-K
62	2101-0391-14	HDBC37-SS-K

Order Codes - Option J - Front Nut UNC 4-40

Option J

Front Nut, UNC 4-40



Plug Connector

15	2101-0392-01	HDBC09-SP-J
26	2101-0392-02	HDBC15-SP-J
44	2101-0392-03	HDBC25-SP-J
62	2101-0392-04	HDBC37-SP-J

Socket Connector

15	2101-0392-11	HDBC09-SS-J
26	2101-0392-12	HDBC15-SS-J
44	2101-0392-13	HDBC25-SS-J
62	2101-0392-14	HDBC37-SS-J



Encitech Connectors AB

Rörkullsvägen 4
SE-302 41 HALMSTAD, Sweden

Tel: +46-(0)35-15 13 90
e-mail: connectors@encitech.com

www.encitech.com