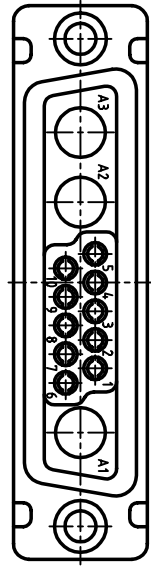
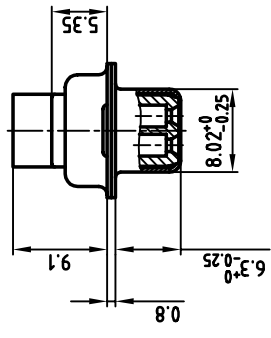
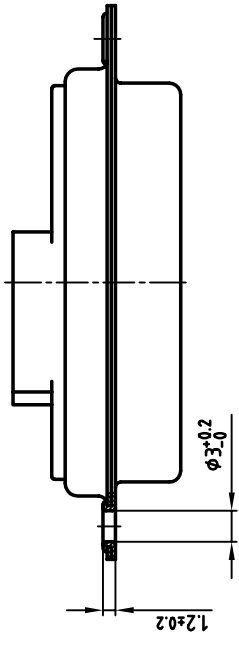
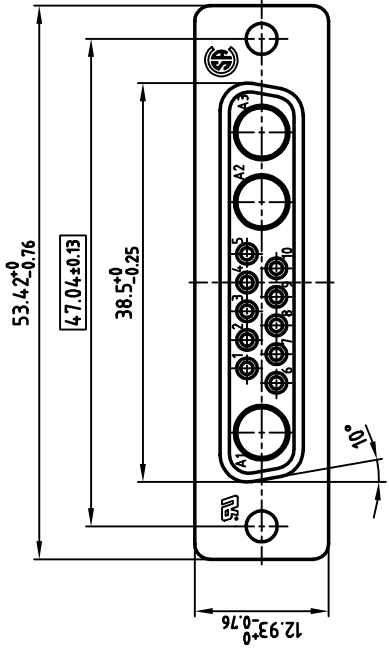


used for: D-SUB COMBINATION CRIMP



NOTES:

1. METALSHELLS: STEEL; min. 320µ" TIN
2. INSULATORS: PBT GF UL 94 V-0, BLACK
3. = CRITICAL DIMENSION: SPC

Directive 2002/95/EC
"RoHS"
Compliant

CONEC CORPORATION BRAMPTON, ONTARIO		tolerance	scale: 2:1	material: SEE NOTES		
2002	date	name	title:	D-SUB COMBINATION FEMALE CRIMP STYLE 13W3S		
drawn	29.01.	Parei	dwg no:			AutoCAD 2000
appd.	30.01.	E. Mickenbecker	13K1A472A			DIN-A
norm			3			sh: 1/1
6-old			part no: 3013W3SXXK99A10X			
rev.	description	date	CONEC			
DO NOT ALTER CAD DRAWING BY HAND						
OWNERSHIP AND COPYRIGHT OF CONEC GMBH						
THIS DRAWING MAY NOT BE COPIED OR REPRODUCED IN ANY WAY, AND MAY NOT BE PASSED ON TO A THIRD PARTY WITHOUT WRITTEN PERMISSION.						