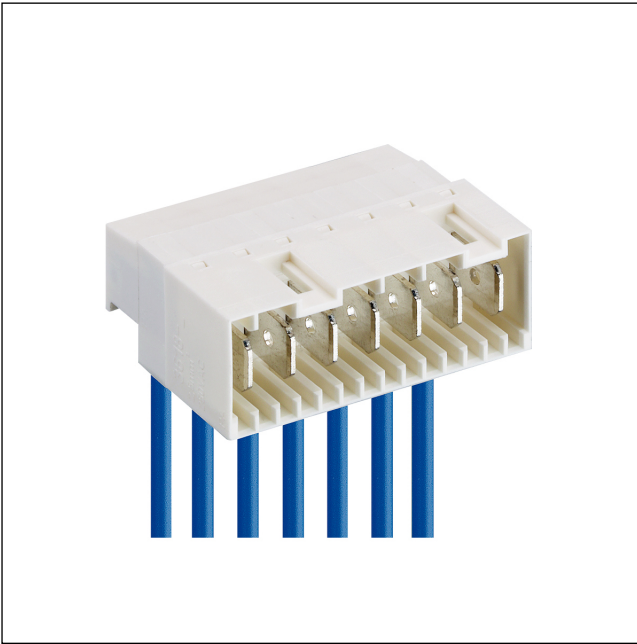


36

3618

RAST 5 connectors, pitch 5.0 mm



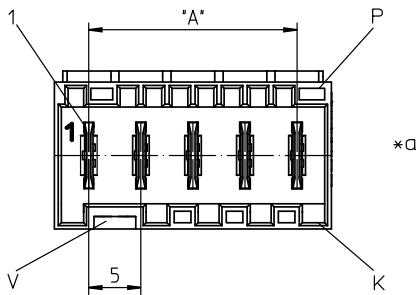
RAST 5 tab header, with screw terminal, with lift clamp
with protection against misplacing, with test holes, cable
departure opposite to lock

Approvals:

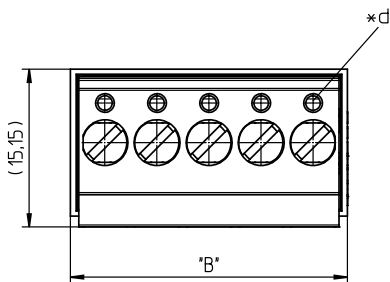
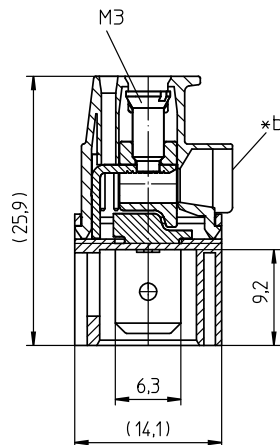
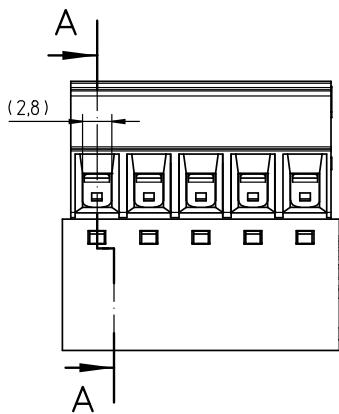


36

3618



A-A



*a K = keying
P = positioning
V = space for lock

*b all screw clamps of the connector to be tightened with the indicated torque

*c cable departure 90°

*e hole for test spike \varnothing 1.3 mm

Environmental conditions

Temperature range -40 °C/+130 °C¹


¹ upper limit temperature (insulating body) RTI (electrical) of the UL Yellow Card

Materials

Insulating body PA GF, V-2 according to UL94¹
Contact tab CuZn, tin-plated
Clamp CuZn, nickel-plated
Screw steel, zinc-plated and chromatiert

¹ component glow wire resistant (GWT 750 °C), testing acc. to IEC 60695-2-11, assessment acc. to IEC 60335-1 (flame < 2 s)

Mechanical data

Contact tab 6.3 x 0.8 mm according to DIN 42644
Tightening torque screw 0,5 Nm
Keying proposals at www.lumberg.com 













Connectable conductors for screw clamp

Section stranded wire 0,14-2,5 mm² (AWG 26-14)
Section stranded wire with ferrule 0,25-2,5 mm² (AWG 24-14)
Section solid wire 0,14-4,0 mm² (AWG 26-12)
Stripping length 8 ± 1 mm

Electrical data (at T_{amb} 20 °C)

Contact resistance ≤ 5 mΩ
Rated current 10 A (T_{amb} 70 °C)
Rated voltage 250 V AC
Material group IIIa (IEC)/2 (UL) (CTI ≥ 250)
Creepage distance 3,5 mm
Clearance 3,5 mm
Insulation resistance > 10 GΩ

Associated products

Counterparts
 3611  3615  3615-1
 3615-2  3615-3  3623
 3623 01 V01  3626  3680
 3683  3686  3687

36

3618

Designation	Pole Number	PU (Pieces)	MDQ (Pieces)	Dimensions	
				A (mm)	B (mm)
3618 02	2	200	1000	5	11.6
3618 03	3	200	1000	10	16.6
3618 04	4	200	1000	15	21.6
3618 05	5	200	1000	20	26.6
3618 06	6	200	1000	25	31.6
3618 07	7	200	1000	30	36.6

Designation to be completed by further details (e.g. for keying, color or material options).

Packaging:

in bulk, in a cardboard box